

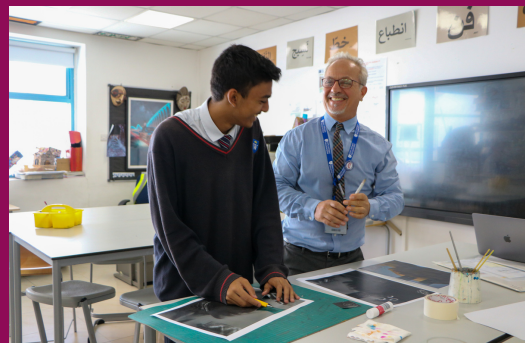


MIDDLE SCHOOL

PARENT HANDBOOK

ACADEMIC YEAR 2023-2024

INTEGRITY



EMPATHY



FORTITUDE





Maryssa O'Connor

CEO/ Principal & Senior Vice President - Education

I am delighted to be able to welcome you to GEMS Wellington International School our consistently outstanding school in the centre of Dubai. WIS will always strive for academic attainment and personal wellbeing, for creating a supportive and inclusive community whilst also celebrating individual successes and for a fulfilling education that endures long after the examination results have been published.

Our purpose as educators is to encourage intellectual curiosity, independent thought and effective learning habits. From an early age, we encourage students to be dynamically intellectual, culturally and creatively develop independence, so by the time they leave Sixth Form, they are well prepared for the expected, but can also tackle the unknowns.

The success of a student cannot be measured only by their academic success alone, but also by the development of their social and interpersonal skills and contribution to school life. Students have over ninety clubs and activities, encompassing the creative arts, outdoor education and a vast array of sports, to choose from in school. We help our students to develop existing interests and to find new ones that will stay with them for life

Here at WIS our students are individuals with potential, unique strengths and interests and I believe that it is our duty as a school to add value to each student by helping them achieve academic success and the joy of learning in an inclusive community in which all our students, parents and staff feel challenged, valued and successful.

With regards,

A handwritten signature in dark ink, appearing to read 'M O'Connor', followed by a period.

CONTENTS

Welcome from the Principal: Mr Jenkins.....	Page 3
Welcome from the Head of School: Mr Thompson.....	Page 4
Welcome from the Head Boy and Head Girl.....	Page 5
Our School Day.....	Page 6
Attendance and Punctuality	Page 7
Uniform	Page 9
Safeguarding	Page 11
High Performance Learning.....	Page 12
Assessment & Curriculum	Page 14-16
Explore, Enrich, Excite (EEE)	Page 17
Communication	Page 19-20
Social Media.....	Page 21
Key Contacts.....	Page 22
Medical Provision	Page 23
WISPA.....	Page 24
Above and Beyond	Page 25

WELCOME TO

WELCOME

GEMS WELLINGTON INTERNATIONAL SCHOOL



It is with great pleasure that I welcome you to our school community for the 2023-24 academic year. I am delighted to present you with our comprehensive parent handbook, an invaluable resource that has been thoughtfully designed to support you in understanding the school's policies, procedures and, most importantly, our values. We believe that education is a collaborative effort, with parents serving as essential partners in their child's learning journey. Our hope is that this handbook serves as a bridge, connecting our shared commitment to providing the best possible educational experience for your child.

We strive to create a culture where students feel valued and have the platform to pursue their personal interests, fulfilling their ambitions. Driven through agency, our students have a voice in co-constructing their learning journey and are fully supported along the way by our highly trained and passionate body of teachers and school leaders. You will see our inclusive and aspirational educational philosophy reflected in the exceptional teaching your child receives daily, delivered through our innovative curriculum design and the bespoke experiences provided for all students.

Our school mission statement is underpinned by the three core values that hold great significance in developing self-aware and socially responsible global citizens of tomorrow: integrity, empathy and fortitude. With integrity, we cultivate a sense of reliability, dependability and authenticity, all of which are essential in building meaningful relationships and personal reputation. Secondly, empathy plays a pivotal role in fostering an understanding and compassion towards others which engenders kindness, tolerance and a genuine desire to help others. Finally, fortitude (often referred to as mental and emotional strength) empowers individuals to persevere through challenges, overcoming obstacles through courage, resilience and determination. Collectively, the presence of our core values helps not only shape the culture of the school, but also the character of our students, who in turn will shape the world around them as they progress through their journey with us.

We look forward to working collaboratively with you over the course of the 2023-24 academic year and celebrating the many successes that are no doubt on the horizon.

Andrew Jenkins**Associate Principal**

WELCOME

WELCOME TO GEMS WELLINGTON INTERNATIONAL SCHOOL

At GEMS Wellington International School, we pride ourselves on offering a truly unique learning journey, placing our students at the heart of everything we do. This is especially true during the Middle School years, a pivotal period characterized by rapid growth, both academically and personally, encompassing social, physical, and emotional development.

Building upon the foundational skills acquired in Lower School, our Middle School curriculum aims to foster greater competency, knowledge, and understanding of the British curriculum. This prepares our students for a seamless transition into Upper School, equipped with a solid educational foundation.

As a fully inclusive school, we prioritize not only academic excellence and achievement for all, but also cultivate an environment that allows students to recognize the inherent greatness within themselves, extending beyond the confines of the classroom. We believe in nurturing and empowering our students to unlock their full potential, fostering a performance mindset. By offering a comprehensive extracurricular program titled 'Explore, Enrich, Excite,' or EEE we provide ample opportunities for students to enhance their existing skills and broaden their horizons.

Our student culture and experience team in Middle School ensure that every student feels valued, safe, and confident, while also facilitating the development of positive relationships that contribute to each student's unique learning journey throughout their time at our school.

I am delighted to be able to welcome you to Middle School.



Oliver Thompson
Head of Middle School



WELCOME FROM OUR HEAD BOY AND HEAD GIRL



Ujjwal Aggarwal
Head Boy for 2023-24

As the current head boy, I am proud to be a part of GEMS Wellington International School, a place that fosters a vibrant and engaging learning environment. The ethos of WIS, where academic rigor blends seamlessly with fun, has been the highlight of my experience here for the past six years. WIS truly excels in offering a diverse range of opportunities, fostering not only academic excellence, but also developing leadership qualities and a deep-rooted sense of community in its students. Our robust curriculum balances academics, sports, and arts, paving the way for the holistic development of all students. This enriching atmosphere, complemented by our unwavering drive to achieve, makes being WIS's Head Boy an absolute honor. Together, we continue to shape WIS as a beacon of inclusive, enriching, and dynamic education.



Wiann Wilson
Head Girl for 2023-24

GEMS Wellington International School embraces a holistic approach to education, fostering an environment that champions ingenuity, leadership, and collaboration. Students here are presented with limitless opportunities to carve their own paths, leading them towards innovative and exceptional achievements in both extracurricular and academic spheres. Guided by a faculty of remarkable and devoted educators, our curriculum offers comprehensive academic programs that instil the values of embracing challenges, self-discipline, and acquiring versatile skills for future accomplishments. At our school, the atmosphere nurtures well-rounded and open-minded individuals, whose persistent endeavour for progress serves as a constant source of inspiration, and therefore it is an honour to be GEMS Wellington International School's Head Girl.

OUR SCHOOL DAY

We believe that good attendance and punctuality are vital indicators of an outstanding school. These factors are also key in enabling students to make the most of their learning opportunities and prepare for a successful transition into the world of higher education or employment.

Parents wishing to collect students early need to do so before 1.30 pm.
A email to the class teacher needs to be sent the day prior.

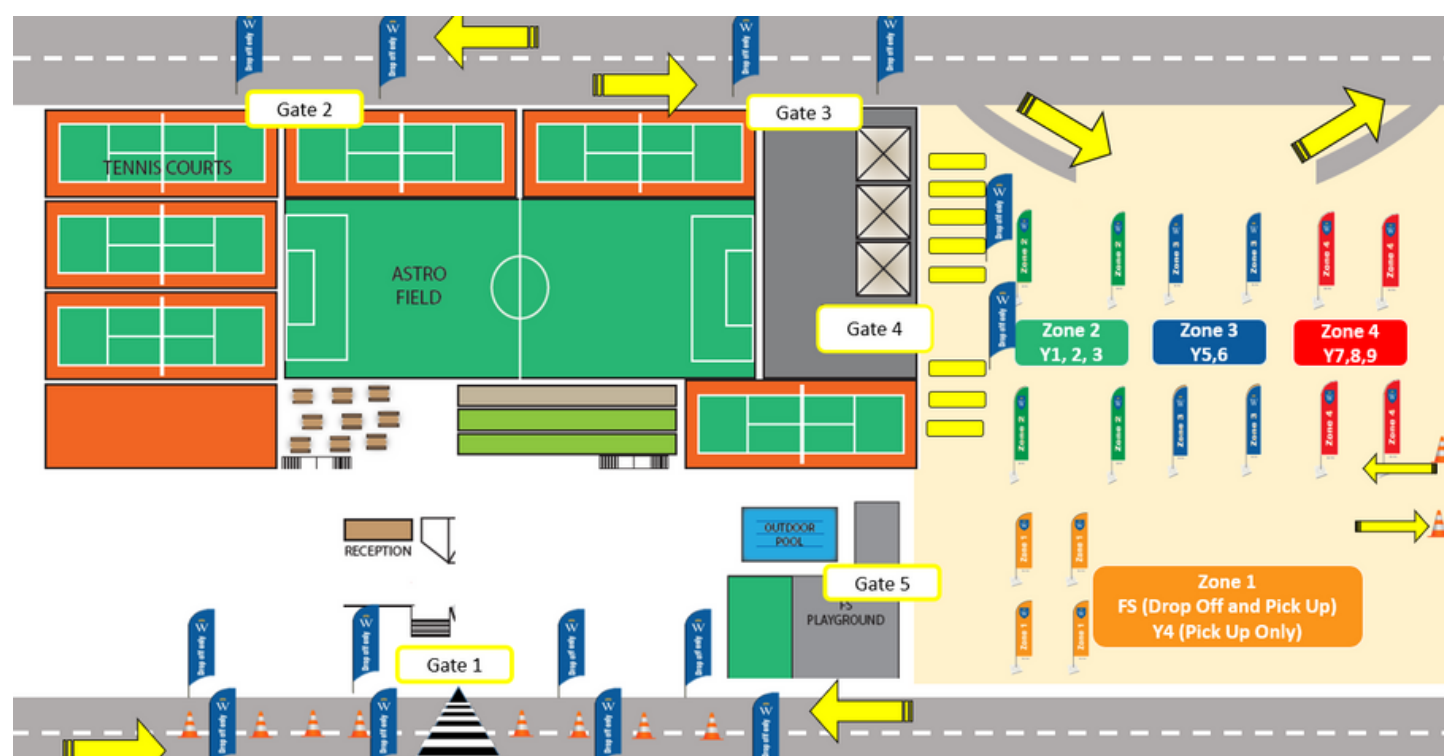
DROP OFF AT

- GATE 2
- GATE 3
- GATE 4

	Middle school timings (Years 5-9)
Start of Day	7.15 - 7.35 am
	7.40am National Anthem plays
End of Day	Monday - Thursday 3.10pm Friday 12pm

COLLECT

- GATE 4



Please do not be offended if we do not let you into school without the proper identification (yellow parent lanyard). We take safeguarding of your children very seriously and it is important that everyone can be identified.

ATTENDANCE AND PUNCTUALITY

At GEMS Wellington International School we believe that good attendance and punctuality are vital indicators of an outstanding school. These factors are also key in enabling students to make the most of their learning opportunities and prepare for a successful transition into the world of higher education or employment. Any barriers to punctuality and regular attendance will be identified and addressed as swiftly as possible by introducing and reinforcing the policy below.

WE EXPECT THAT ALL STUDENTS WILL:

- Attend school every day as per the published academic calendar
- Arrive on time every morning (learning starts at 7.40am)
- Be on time to all lessons

WE ASK PARENTS TO:

- Support the schools expectations of attendance
- Ensure their child arrives to school on time every morning
- Endeavor to schedule medical appointments outside of school hours
- Avoid students travelling during term time
- Email absences_wis@Gemsedu.onmicrosoft.com and your class teacher by 7.30am when your child is absent
- Work with the school to resolve issues and ensure their child has good attendance and punctuality
- Inform the school in the event of a student contracting an illness or suffering an injury which is likely to involve an absence of 3 days. Medical notes will be required for absences of 3 or more days
- Complete a leave of absence form (available from Reception) in advance of a scheduled absence (PLEASE NOTE- this will be sent to the Head of School and may or may not be authorised after review).



Leave of Absence Form

Now we have made it easier with a one click option of scanning the QR code where parents could fill in the leave request online and submit it. Leave request submitted will be automatically recorded on an excel sheet which shall be accessed by the Heads of school for approving/declining and then the Attendance officer/Student absence team shall be contacting the parents accordingly.

KHDA states that students should not have more than 20 consecutive days or 25 non-consecutive days of unauthorised absence. Should this be exceeded then students are at risk of losing their place at the school. Outstanding attendance is 98% as a minimum.

Punctuality is monitored by the Class Teacher and Head of Year and parents will be contacted where there is persistent lateness.



UNIFORM

The aim of our uniform is to ensure that students take pride in being members of the GEMS Wellington International School community. Personal presentation is therefore very important and a high standard of personal appearance is expected of all students at all times, both inside and outside of School. The students are our ambassadors when they are in the Dubai community and, what they do and say, and how they look reflects on all of us. Students will continue to create a positive impression of GEMS Wellington International School by leaving school in their uniform and wearing it with pride. The uniform is compulsory throughout the School and may be purchased from the Threads store, Times Square. Alternatively uniform can be ordered online from: www.threadsme.com.

Additional Uniform guidance is below:

CORE UNIFORM		PE UNIFORM		SWIMWEAR - UNISEX	
Y5 - Y11		ALL YEARS		ALL YEARS	
BOYS  LT. BLUE SHIRT NAVY PINSTRIPE TROUSER HOUSE COLOUR CLIP TIES: Y5-Y6 FULL TIES: Y7-Y11		UNISEX  FRONT BACK NAVY / WHITE NAVY / RED NAVY / BLACK NAVY / GREEN Y10 TO Y11 EOP NAVY SPORTS LEGGINGS HOUSE COLOURS RED, GREEN, WHITE, BLACK, RUBY, EMERALD, DIAMOND, ONYX UNISEX NAVY HOODIE ONLY FOR PE NAVY SHORTS		 NAVY / RED BACK SWIMSUIT NAVY / BLACK NAVY / WHITE NAVY / GREEN JAMMER NAVY / RED BACK NAVY / BLACK NAVY / WHITE NAVY / GREEN SWIMMING TRUNKS NAVY / RED NAVY / Green FS1 - FS2 SILICON CAP NAVY / Green NAVY / Black NAVY / White	
GIRLS  LT. BLUE BLOUSE NAVY PINSTRIPE TROUSER (OPTIONAL) NAVY PINSTRIPE KNEE SKIRT HOUSE COLOUR NECK SCARF		WINTERWEAR ALL YEARS UNISEX  UNISEX NAVY PULLOVER GIRLS NAVY CARDIGANS		ADDITIONAL ITEMS ALL YEARS UNISEX CAPS BASEBALL CAP - Y3 TO Y6  UNISEX CAPS LEONNAIRE CAP - YEAR F31 TO Y2  TIES & SCARFS  HAIR BAND & SCRUNCHIES BLACK BELT  SOCKS & TIGHTS  SHOES  BAGS  12 INCHES 16 INCHES 18 INCHES GYM BAG  A-LINE BAG 	



SAFEGUARDING

GEMS Wellington International School is fully committed to safeguarding the welfare of all students and young people. We recognise our responsibility to take all reasonable steps to promote safe practice and to protect students from harm, abuse and exploitation. We acknowledge our duty to act appropriately in response to any allegations, reports or suspicions of abuse. Paid staff and volunteers will endeavor to work together to develop an ethos which embraces difference and diversity and respects the rights of students, young people and adults. If you have any questions or concerns regarding the safeguarding of children at WIS then please contact one of the Designated Safeguarding Leaders below.



MS NATALIE TWIGGER
LOWER SCHOOL



MR OLIVER THOMPSON
MIDDLE SCHOOL



MS SARAH WRIGHT
UPPER SCHOOL & WHOLE
SCHOOL LEAD

Our Designated Safeguarding Leads have received training in dealing with sensitive issues surrounding child protection of both students and parents. It is our duty of care to follow up anything which a student may disclose to us. In some cases this might mean you are invited into school to discuss a situation that your child has raised. If necessary, we seek support and follow professional advice for our families from suitable agencies in Dubai.

Lanyards:

All employees and visitors to the school are required to wear a lanyard for identification purposes. Yellow parent lanyards can be obtained from the reception and this must be done as soon as possible. Photographs are required on the ID cards in the lanyards for identification purposes. In order to apply for a parents lanyard, please complete and return the application form to our reception team on s.thomas1_wis@gemsedu.com with clearly labelled photographs of your child and anyone that collects your child from school (Parents/Guardians/Nanny etc). Maintaining site security is of the utmost importance. As a result, parents who do not display their lanyards will not be permitted entry to the school site.

Lanyard Details:

- Blue = GEMS Wellington International School staff
- Yellow = Parents/Guardians - including nannies & drivers
- Pink = People who attend the school regularly, such as external Music Teachers, Invigilators
- Red = Contractors (escorted by a member of staff)

Those attending the school regularly and will be in contact with the students (e.g. pink lanyard wearers) will have completed all of the necessary safeguarding checks and training.

Please do not be offended if we do not let you into school without the proper identification. We take safeguarding of your children very seriously and it is important that everyone can be identified.



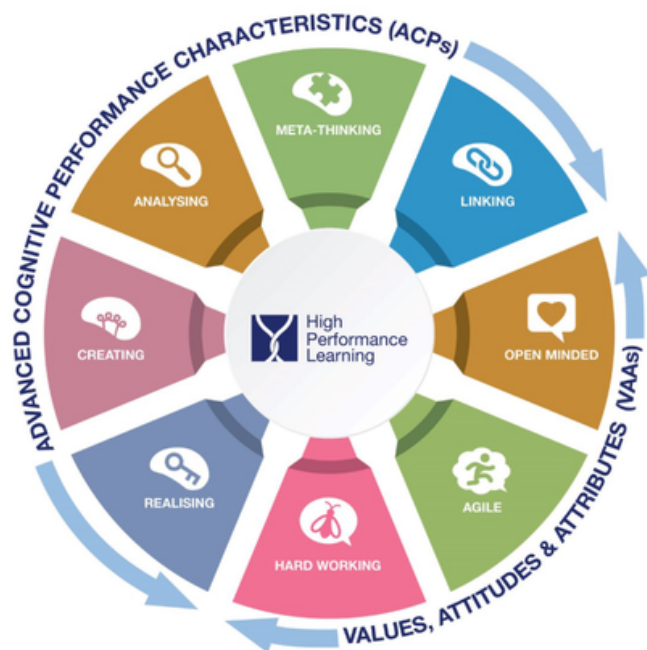
HIGH PERFORMANCE LEARNING

At GEMS Wellington International School our High-Performance Learning (HPL) programme instills within our students that they can achieve the very best grades through the development of appropriate learning habits. To reach the very top, students need to work hard, ask for help when they need it, and, most importantly, believe that they can do it. For them to believe it is possible, it is essential that parents and teachers model that positive assumption, known as our 'Performance Mindset'. As a 'World Class School', accredited by HPL, we do not let our students think "I'm not good enough", but encourage them to believe that with enough hard work that anything is possible and that they can achieve excellence.

The ACPs (Advanced Cognitive Performance characteristics) and VAAs (Values, Attitudes and Attributes) form the key principles of HPL. The ACPs are "thinking skills" and these require practice in order to become a high performer. At WIS we call these 'The HPL Brains' ensuring that our students are encouraged to think analytically and creatively, alongside encouraging them to link ideas and concepts, with the expectations that this is done accurately and quickly to train the brain effectively. In addition to this our students reflect on their learning by 'thinking about thinking' always ensuring they consider 'how' and 'why' they have arrived at a particular conclusion.

At WIS we encourage the belief that success is not possible without the right attitude, so encourage students to practice and improve their Values, Attitudes and Attributes (VAA's) too, with a focus on three core areas: hard work, empathy and the ability to be agile. These life skills are the DNA of a WIS student.

In school, students develop these ACPs and VAAs explicitly in lessons, but it is also vital for them to continually improve outside of school, realising how they affect every aspect of their lives. In the end, by developing their ACPs and VAAs, your children will become more efficient learners and will be ready for their exams, for further study, work, and for the rest of their lives. WIS prides itself on our students not just being ready for the next stage of their academic journey: our students are ready for whatever challenges in life come their way and as High-Performance Learners, they will tackle life head on with a thirst to overcome any obstacle.



Years 5 and 6

Our Year 5 and 6 students will be embarking on a specialist approach to the teaching of English, Mathematics and Science. Students will continue to have a class teacher, now known as a Form Tutor, who will teach them all of the foundation subjects. The class teacher will also be a specialist in either English or Mathematics, meaning your child will also be taught either English or Mathematics by another specialist teacher. Students in Year 5 and 6 will also have one of their science lessons co-taught by a specialist Science teacher from the Science department. During students two Performing Arts they will study Dance, Drama and Music. Furthermore, students will also continue to study Design Technology with a specialist teacher. Other non-core subjects that students will study are Computing, Humanities, Art and Physical Education. In addition, all students will study Arabic and Moral, Social and Cultural Studies (MSC). Muslim students will follow the Islamic Studies curriculum.

Information relating to the National Curriculum for Key Stage 2 (Years 5-6) can be found through the following link: <https://www.gov.uk/government/publications/national-curriculum-in-england-primary-curriculum>

As a British Curriculum School we follow the guidelines above with some adaptations to suit the international context of the school.

Working Towards the Expected Standard	<p>Emerging with their understanding of the objectives and are still working on fundamental basics. Additional support will be put in place to help accelerate a child's progress.</p> <p>Developing their understanding of the objectives and are beginning to secure those fundamental basics. Additional support will be put in place to help accelerate a child's progress.</p>
On track to Meet the Expected Standard	<p>Secure with their understanding of the objectives and fundamental basics that have been taught and can use them independently.</p>
On track to Exceed the Expected Standard	<p>Secure+ with their understanding of the objectives and fundamental basics and therefore beginning to show their advanced knowledge, in a variety of ways across the curriculum, whilst working more independently.</p>
On track to be Working at Greater Depth	<p>Mastered the objectives and are applying them across the curriculum, in a range of ways, confidently and imaginatively. Children work independently and can clearly reason, justify and explain their thinking.</p>

As students progress through each term, more of the year group objectives are covered.

Term 1	Term 2	Term 3
0-40% coverage of the year group objectives	Up to 70% coverage of the year group objectives	Up to 100% coverage of the year group objectives
Your child will be assessed as either an E , D , S , S+ or M based on their understanding of this 40% of the curriculum	Your child will be assessed as either an E , D , S , S+ or M based on their understanding of this 70% of the curriculum	Your child will be assessed as either an E , D , S , S+ or M based on their understanding of 100% of the curriculum

Years 7, 8 and 9

Our curriculum offered in Years 7, 8 and 9 is an exciting and engaging curriculum that not only follows the KS3 National Curriculum for England but focuses on allowing students to nurture passions and curiosities through the pathways that they study. It is designed to equip students with the skills and attributes required for later study at GCSE and IB and all students are taught by secondary qualified specialist teachers in all subjects.

Students in these year groups study the core subjects alongside the wider curriculum. The core curriculum consists of English, Maths, Science, Physical Education (PE) and Arabic; the wider curriculum consists of Modern Foreign Languages (Spanish, French and German), Geography, History, Moral Social and Cultural Studies. In addition, our Muslim students will follow the Islamic Studies curriculum, whilst non-Muslim students will complete an alternative skills-focused curriculum. Students in Year 7 will all be given the opportunity of studying one of three Modern Foreign languages (Spanish, French or German).

Outside of the core elements of the curriculum, students are also exposed to a wider range of subjects that will develop practical skills as well as other important skills and competencies that will nurture their interests and aspirations, supporting their transition into GCSE and IB. The subjects include Design Technology, Food, Preparation and Nutrition, Art, Music, Drama, Robotics, Coding, Entrepreneurship and Sustainable Design.

Working Towards the Expected Standard	<p>Emerging with their understanding of the objectives and are still working on fundamental basics. Additional support will be put in place to help accelerate a child's progress.</p> <p>Developing their understanding of the objectives and are beginning to secure those fundamental basics. Additional support will be put in place to help accelerate a child's progress.</p>
On track to Meet the Expected Standard	<p>Secure with their understanding of the objectives and fundamental basics that have been taught and can use them independently.</p>
On track to Exceed the Expected Standard	<p>Secure+ with their understanding of the objectives and fundamental basics and therefore beginning to show their advanced knowledge, in a variety of ways across the curriculum, whilst working more independently.</p>
On track to be Working at Greater Depth	<p>Mastered the objectives and are applying them across the curriculum, in a range of ways, confidently and imaginatively. Children work independently and can clearly reason, justify and explain their thinking.</p>

As a British Curriculum School that transitions into IB in Years 12 and 13, we follow the guidelines below with some adaptations to suit the international context of the school: <https://www.gov.uk/government/publications/national-curriculum-in-england-secondary-curriculum>

Detailed curriculum booklets are published on LearnOS each term to explain specific aspects of the curriculum as the year progresses.

As students progress through each term, more of the year group objectives are covered.

Term 1	Term 2	Term 3
0-40% coverage of the year group objectives	Up to 70% coverage of the year group objectives	Up to 100% coverage of the year group objectives
Your child will be assessed as either an E , D , S , S+ or M based on their understanding of this 40% of the curriculum	Your child will be assessed as either an E , D , S , S+ or M based on their understanding of this 70% of the curriculum	Your child will be assessed as either an E , D , S , S+ or M based on their understanding of 100% of the curriculum

EXPLORE, ENRICH, EXCITE
(EEE)

At GEMS Wellington International School, we pride ourselves on the opportunities we provide for our students both from an academic and personal perspective. Our EEE (Explore, Enrich, Excite) Programme allows our students to explore the world around them, provide enrichment to their already outstanding curriculum pathways, as well as excite their minds for the future world.

Each EEE complements our in-school calendar and annual global events, as well as the stage of education that our students are currently experiencing. From FS2 to Year 13 each student has access to opportunities designed to prepare them for the new world around them, as well as build upon already established interests.

Over 200 clubs and opportunities are offered as part of our EEE provision that is split into six domains, STEM, Creativity, WIS Wildcats, Music and Performing Arts, and Wellbeing, this enables students who have a variety of different interests to choose a bespoke provision that best suits their individual needs, remaining consistent with the values, attitudes and attributes of the High-Performance Learning program inside and outside of the classroom.

Each term our EEE booklet and how to sign up for each amazing EEE club will be sent through the LearnOS.

In addition to our internal EEE provision our external extra-curricular partner ESM provides our students with some fantastic opportunities to take part in both 1:1 and group activities across a wide range of disciplines both in sport and academics, more information on ESM can be found in our EEE booklets each term.





Parental Communication in Middle School

There are several ways in which the School will communicate with parents:

- 'Face to Face' communication is important with our parents of our younger students. If you are dropping off and collecting then we encourage you to build that relationship with your Class Teacher early on. If your child gets the bus or you are unable to collect then please rest assured that we will ensure you are contacted weekly by the class teacher who will be happy to arrange mutually convenient 1:1 meetings either face to face or online.
- End of week email from class teacher (Year 5 to Year 9) sharing some of the learning and activities over the past week and informing you of dates and events coming up in your child's year group.
- If you have a query, concern or comment please speak to your child's teacher as they are the person who best knows your child and will either be able to help with your query or direct you to the person who can. The Head of Year is also your main point of contact regarding any information you need for the class and year group.
- We will also host a variety of coffee mornings and information evenings which you will be invited to.

Expectations

- Please allow us 48 working hours to respond to an email from you. On some occasions it may take longer for us to fully respond but you should hear back from us within 48 working hours.
- We ask that emails are written in a courteous manner to our staff. If an email is sent regarding a concern we will do our utmost to respond and rectify the situation. However, we do ask that you write to in a polite manner and avoid the temptation to make generalisations.



ADMINISTRATION CONTACTS

Please see below for information relating to our key admin contact, who can support you with queries that you may have.



Anna Awala
Receptionist



Jamie Morris
Receptionist



Pauline Magege
Receptionist



Emily Lander
Registrar



Ammarah Siddique
Admission
Secretary



Bijili Binu
Admissions Assistant



Chanelle Hughes
Parent Relations
Executive

CONNECTING WITH THE SCHOOL



LearnOS

Please ensure that you download our LearnOS App. This will enable you to view and access all Termly Academic Reports and update any personal details relevant to home/school communication. This will also provide you with a host of GEMS related products and initiatives. With the LearnOS App, parents can now access and edit student information, pay fees, view attendance and assessment reports, submit leave requests and do much more in one place



Social Media

We celebrate the successes of students and teachers on our social media pages and we share the latest news on a daily basis. We use Facebook (GEMS Wellington International School), Instagram (gems_wis) For safeguarding reasons we ask that you do not post pictures of other students at school events on social media.

If you do not wish for your child to be featured on Social Media, please contact our Parent Relations Executive directly on pre_wis@gemsedu.com



Website

Our website provides you a wide variety of information that you may find helpful. On the website, you can discover more about our Leadership Team as well as key information about the curriculum, our policies, enrollment, student life, our school calendar, and so much more.

Visit the website on www.wellingtoninternationalschool.com



WISway Newsletter

Our weekly method of communication to parents is the WISway newsletter, which provides key messages, weekly highlights and details upcoming events throughout our school. This newsletter is released weekly through our GEMS Connect app and emailed to you directly.



End of Week Emails

Parents will receive end of week emails from their Heads of Year. These emails will inform parents of important information from the week as well as the next week, upcoming events and other key information that parents should be aware of. These emails will be sent to the primary contact that is listed with the school.



KEY CONTACTS

For any queries or concerns in the first instance, you should contact your child's teacher and then their Head of Year. These members of staff are the best informed to help with any query you might have. If necessary, they can then pass your query to a member of staff who is better placed to help. If you have an appointment with a member of staff, then please come to the front reception desk where our reception staff will contact the person you have the appointment with. They will meet you and escort you to the designated meeting room. It is always best to ensure that a prior request is made for an appointment, so that our teachers and staff can plan accordingly for your visit to school.

Pastoral Leader Email Addresses:

<u>Name</u>	<u>Designation</u>	<u>Email Address</u>
Mr Thompson	Head of Middle School	o.thompson_wis@gemsedu.com
Ms Harvey	Assistant Headteacher - Year 5-7	c.harvey_wis@gemsedu.com
Mr Ellis	Assistant Headteacher - Year 8-9	m.ellis_wis@gemsedu.com
Ms England	Head of Year 5	h.england_wis@gemsedu.com
Mr Edwards	Head of Year 6	a.edwards_wis@gemsedu.com
Ms Ryan	Head of Year 7	s.ryan_wis@gemsedu.com
Mr Scicluna	Head of Year 8	c.scicluna_wis@gemsedu.com
Mr Hawksworth	Head of Year 9	l.hawksworth_wis@gemsedu.com
Student absence	569962428	absences_wis@Gemsedu.onmicrosoft.com

Some other key email addresses:

<u>Name</u>	<u>Designation</u>	<u>Email Address</u>
Ms Doherty	PA to Associate Principal	secondaryadmin_wis@gemsedu.com
Mrs Standring	Head of Learning and Teaching	j.harrison_wis@gemsedu.com
Ms Ghavami	Head of Curriculum Assessment	c.ghavami_wis@gemsedu.com
Mrs Christley	Head of Curriculum and Assessment	s.christley_wis@gemsedu.com
Ms Hamdan	Head of Arabic and Islamic	h.hamdan_wis@gemsedu.com
Mrs Nicola Harrison	SENDCo	n.harrison_wis@gemsedu.com
Ms Santos	Middle School Counsellor	c.santos1_wis@gemsedu.com

MEDICAL PROVISION



Dr Ishrat Jehan

Kristine Caculitan
(Nurse)Jissa
Wilson
(Nurse)Mary Obach
(Nurse)Rashida Begum
(Nurse)**OUR MEDICAL TEAM**

Our fully qualified Clinical Team are on hand to support and look after the children in the event of illness or injury. Our medical team are well qualified health professionals who have a wealth of experience in their field, alongside many years working within Dubai Schools.

WHAT SHOULD YOUR CHILD DO IF THEY FEEL UNWELL?

The school clinics are located between the swimming pool and the sports hall. If your child feels unwell during a lesson, they should speak to their class teacher, who will provide them with a note to attend the clinic. If they feel unwell during Break or Lunch, they can escort themselves to the clinic.

The clinic is operational between 7.30am-4.30pm Monday-Thursday and 7.30am-12.15pm on Friday. If the Clinical Team decides your child is unwell they will call home to inform you or ask you to collect your child from school.

If your child is treated at school, the medical team will send home a green medical information slip so you are aware of the treatment. Examples of this are; Plaster on a minor cut, cream administered for mosquito bite. If you are collecting your child from the school because they are ill or injured then your child will need a green medical slip to ensure that their attendance records are updated.

SENDING MEDICATION TO SCHOOL:

If your child requires medication and has to take it during the school day, you should send this with a note and instructions to the nurses. The student will attend the clinic at the required time and the nurses will ensure the right amount of medication is administered.

CONTACT DETAILS FOR THE CLINICAL TEAM

wismedicaldepartment_wis@gemsedu.com or you may also call the reception on 04 307 3000 and request to speak to one of the medical team

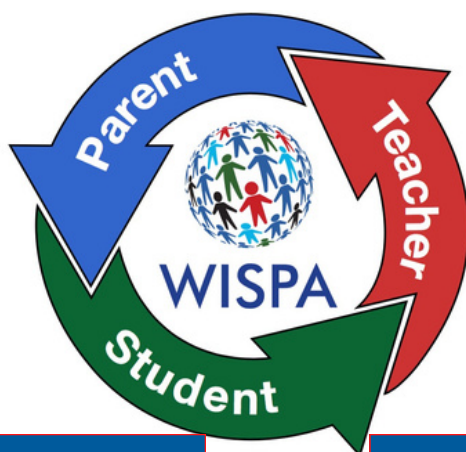
WISPA

WISPA - WIS PARENTS ASSOCIATION

Our Wellington International School Parents Association (WISPA) are an integral part of the WIS school community and with over 2000 families in the school the organisation is ever expanding, with a calendar full of events.

WISPA's aim is to promote our ethos of 'Parents as Partners', creating a bridge for increased parental partnership with events that bring together the WIS community. They play an important role in supporting the school's leadership team in developing the strategic vision for the school, creating opportunities to ensure that everyone has a sense of belonging to the WIS school community.

WISPA look forward to another successful academic year in 2023/2024. If you would like to get involved please reach us out on wispadubai@gmail.com or find us on our closed Facebook page - 'WIS Parents support group / WISPA'.





We are delighted to share with you our 'Above and Beyond' website for our Middle School students that is available to be accessed over our holiday periods.

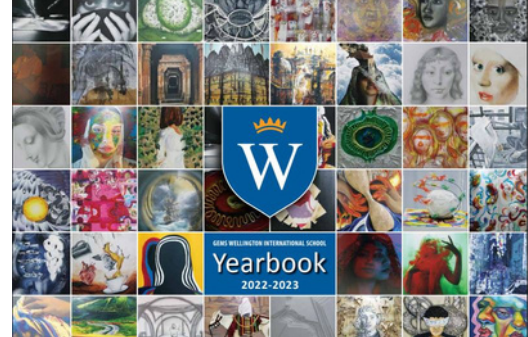
The website holds a variety of engaging activities for your children to complete in their own time.

This has been an incredibly successful initiative over our previous holidays with every intention of helping to not only reinforce learning that has taken place during the school term, but to also prepare your child for the upcoming terms learning.

Please see the information available on the Above and Beyond website:

<https://sites.google.com/gemswis.com/lower-school-above-beyond/home>

EMPATHY



14 YEARS
OUTSTANDING
تميز



INTEGRITY



FORTITUDE





GEMS Wellington
International School

مدرسة جيمس ولينغتون
الترنشايدونال



GEMS Wellington International School is fully committed to safeguarding the welfare of all students and young people. We recognise our responsibility to take all reasonable steps to promote safe practice and to protect students from harm, abuse and exploitation. We acknowledge our duty to act appropriately in response to any allegations, reports or suspicions of abuse.