



GEMS Wellington
International School

مدرسة جيمس ولينغتون
الترناشيونال



PARENT HANDBOOK

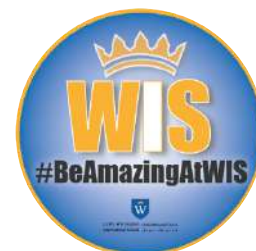
UPPER SCHOOL

ACADEMIC YEAR 2022-2023



CONTENTS

Welcome from the Principal: Mrs. O'Connor	Page 4
Welcome from the Head of School: Ms. Gathercole.....	Page 6
Welcome from the Head Boy and Head Girl.....	Page 8
Our School Day	Page 9
COVID-19 Protocols and Safety	Page 10
Attendance and Punctuality	Page 11
Uniform.....	Page 13
Safeguarding	Page 15
High Performance Learning.....	Page 16
IB Learning Principles	Page 17
Assessment and Curriculum.....	Page 18
Explore, Enrich, Excite (EEE).....	Page 19
Our Results.....	Page 20
Communication	Page 22
Social Media.....	Page 24
Key Contacts.....	Page 25
Medical Provision	Page 26
WISPA.....	Page 27
Above and Beyond	Page 28



WELCOME

WELCOME TO GEMS WELLINGTON INTERNATIONAL SCHOOL



Maryssa O'Connor
Principal - CEO

I am delighted to be able to welcome you to GEMS Wellington International School, our consistently outstanding school in the centre of Dubai. WIS will always strive for academic attainment and personal wellbeing, for creating a supportive and inclusive community whilst also celebrating individual successes and for a fulfilling education that endures long after the examination results have been published.

Our purpose as educators is to encourage intellectual curiosity, independent thought and effective learning habits. From an early age, we encourage pupils to be dynamically intellectual, culturally creatively and develop independence, so by the time they leave Sixth Form, they are well prepared for the expected, but can also tackle the unknowns.

The success of a student cannot be measured only by their academic success alone, but also by the development of their social and interpersonal skills and contribution to school life. Pupils have over ninety clubs and activities, encompassing the creative arts, outdoor education and a vast array of sports, to choose from in school. We help our students to develop existing interests and to find new ones that will stay with them for life

Here at WIS our students are individuals with potential, unique strengths and interests and I believe that it is our duty as a school to add value to each student by helping them achieve academic success and the joy of learning in an inclusive community in which all our students, parents and staff feel challenged, valued and successful.

With regards,

M O'Connor





WELCOME

WELCOME TO GEMS WELLINGTON INTERNATIONAL SCHOOL



Sophie Gathercole
Head of Upper School

It is a pleasure to welcome you to GEMS Wellington International School.

Students enter the Upper School in Year 10 where they study a two year GCSE study programme, completing their final exams at the end of Year 11. In Year 12 and Year 13, students go on to study the International Baccalaureate at Post-16 to fully support breadth in their knowledge and skills as international citizens of the world. It is our ambition that every student reaches their aspirational potential at WIS and that our students are confident, kind, polite and tolerant individuals who are happy and resilient.

We are a wholly inclusive school, that strives not only for academic excellence and achievement for all, but we also encourage students to see their inner greatness beyond the realms of a classroom. In addition to nurturing academic progress, we also encourage student learning beyond the curriculum to enhance skills they possess through our extensive extracurricular programme, 'Explore, Enrich, Excite'.

Our purpose as educators is to encourage intellectual curiosity, independent thought and effective learning habits. We encourage students to be dynamically intellectual, culturally creative and develop independence so that by the time they leave us for Higher Education, they are well prepared for the expected, but are confident in tackling the unknown.

Welcome to your journey within our Upper School WIS Community.

Yours faithfully,

A handwritten signature in black ink that reads "Gathercole".





WELCOME FROM OUR HEAD BOY AND HEAD GIRL



Talha Haroon
Head Boy for 2022-23

GEMS Wellington International School creates an enabling, inclusive environment which inspires each student to achieve and succeed. With its global outlook, the school provides its students with unending and unmatched opportunities both academically and personally. In addition, through a balanced curriculum that encompasses academics, sports, and the arts, Wellington truly cultivates rounded and balanced personalities. A sense of community and togetherness that is hard to replicate has made WIS outstanding for the previous 12 years. This captivating environment, along with students who are constantly motivated to reach new heights, makes it an absolute privilege to be GEMS Wellington International School's Head Boy.



Salma Mahmoud
Head Girl for 2022-23

GEMS Wellington International School is home to innovation, collaboration and creativity. Students are given endless opportunities to pave a path that enables them to set, and undoubtedly achieve, sustainable and fulfilling goals within both personal and scholastic realms. Led by incredible and dedicated members of staff, the GCSE and IB academic programmes provided at upper school guide our students to value challenge and self discipline, along with transferable skills that promise future success. The environment at our school cultivates well rounded, tolerant individuals who are driven towards progress and it is an honor to be surrounded by this source of inspiration daily.



OUR SCHOOL DAY

We believe that good attendance and punctuality are vital indicators of an outstanding school. These factors are also key in enabling students to make the most of their learning opportunities and prepare for a successful transition into the world of higher education or employment.

Morning Drop Off

7:15 - 7:35am

Drop Off at Gate 1

Start of Day

7.40am

The National Anthem for the United Arab Emirates is played at 7:40am

End of Day

Monday to Thursday - 3:15pm

Friday - 12:00pm

Collect from Gate 1



The below protocols have been put in place during the 2021/2022 academic year to ensure the health and safety of students and staff in the school and are reinforced across all lessons in the Lower School each day. These protocols are reviewed on a regular basis and you will be informed of any updates that we make going into the 2022/23 academic year.

Upper School students attend school face to face. Classrooms and corridors have been adapted in line with KHDA and DHA guidance to enable the correct social distancing measures and safety protocols. All staff, and students in Year 2 and above are required to wear a mask.

A form of Remote Learning Provision will be available if you are able to present a DHA PCR test. Please make sure the PCR test is sent to our clinic wis_medicaldepartment@Gemseducation.com and Absence Team via absences_wis@Gemsedu.onmicrosoft.com.

Please note that home tests/lateral flows are not accepted.



Any barriers to punctuality and regular attendance will be identified and addressed as swiftly as possible by introducing and reinforcing the policy below.

We expect students to:

- Attend school at every available opportunity during term time
- Arrive to school on time every morning (learning starts at 7.40am)
- Be on time to all lessons
- Students in Middle & Upper School to take responsibility for obtaining and completing work when absence cannot be avoided

We expect parents to:

- Send their child to school at every available opportunity during school term time
- Support their child in arriving at school on time every morning
- Support their child by arriving punctually for their child's collection at the end of the day
- Endeavour to schedule medical appointments outside of school hours
- Avoid students travelling during term time
- Inform absence_wis@gemsedu.com, the class/form teacher and the Head of Year by 7.30am if their child is going to be absent from school that day with the reason for the absence
- If your child has a COVID related absence, please also inform health_wis@gemsedu.com in addition to absence_wis@gemsedu.com
- Use the GEMS Connect App to monitor and support their child's attendance
- Work with the school to resolve issues and ensure their child has good attendance and punctuality.
- Inform the school in the event of a student contracting an illness or suffering an injury which is likely to involve an absence of 3 days. Medical notes will be required for absences of 3 or more days
- Complete a leave of absence form 2 weeks in advance of a scheduled absence (PLEASE NOTE – this will be sent to the Head of School and may or may not be authorised after review).

KHDA states that students should not have more than 20 consecutive days or 25 non-consecutive days of unauthorised absence. Should this be exceeded then students are at risk of losing their place at the school. Outstanding attendance is 98% as a minimum.

Students who arrive late must go to the Attendance Officer in the Admin Office (second floor, opposite English corridor) and receive a late slip BEFORE they go to their lesson. Punctuality is monitored by the Heads of Year and parents will be contacted where there is persistent lateness.





OUR UNIFORM

The aim of our uniform is to ensure that students take pride in being members of the GEMS Wellington International School community. Personal presentation is therefore very important and a high standard of personal appearance is expected of all students at all times, both inside and outside of School. The students are our ambassadors when they are in the Dubai community and, what they do and say, and how they look reflects on all of us. Students will continue to create a positive impression of GEMS Wellington International School by leaving school in their uniform and wearing it with pride.

The uniform is compulsory throughout the School and may be purchased from the Threads store, Times Square. Alternatively uniform can be ordered online from: www.threadsme.com.

For students in Year 10 and Year 11:



Shirts	Boys: shirts should be tucked in and top button fastened Girls: tailored shirts may be worn over trousers unless they are long
Skirts	Below the knee or worn with tights
Trousers	Must be full length Optional item – plain black belt
Socks	Boys: Plain black or navy Girls: Plain navy or white socks, navy tights
Shoes	Smart formal plain black leather closed toe shoes - No trainers/casual shoes
PE Uniform	WIS Leggings may be worn UNDERNEATH the shorts. Hat and water bottle must be taken to every PE lesson
Hair	Tied back and off the face. Discreet black, white or dark navy hair accessories. All hair must be of natural colour, no less than Grade 2 cut. No extreme hairstyles/cuts/hair sculpture.
Jewellery	The only permitted jewellery items are: a watch, discrete religious jewellery and 1 small stud earring in the lobe of each ear. No other body or face piercing is permitted. Tattoos are not permitted.
Make Up/ Nail Varnish	Nail varnish is not permitted. Make up is not permitted until Year 12/13 where, if worn it must be discreet.
Facial Hair	Only for religious reasons
Religious Coverings	Head coverings - plain black, white or navy blue



For students in Year 12 and Year 13:

Our students in Year 12 and Year 13 are role models for the younger students around them. We therefore expect the highest standards of business dress from our oldest students.

- Boys and girls are permitted to wear a black, navy blue or grey suit of their own choosing.
- Boys:** White collared business shirt, tucked into trousers. House colour tie, or school tie, must be worn up to the collar, with top button done up
- Girls:** White collared business blouse, tucked in or tailored for over the trousers

	Sixth Form Uniform Regulations
Hair	No extreme hairstyles/hair sculpture/tram lines/ less than Grade 2 Natural colouring only
Jewellery	The only permitted jewellery items are – Discreet jewellery is permitted No other body or face piercing is permitted Tattoos are not permitted
Facial Hair	To be kept neat and tidy
Make Up	Discreet and natural make up and nail varnish is permitted if desired
Shirts	White collared business shirt Boys: Tucked into trousers Girls: Tucked in or tailored over the trousers
Jacket	Plain dark coloured smart suit jacket
Tie	Boys – Tie, A4 length, up to collar, top button done up
Shoes	Smart formal plain dark leather closed toe shoes. No trainers/casual shoes, no Velcro, no canvas.
Trousers	Plain coloured smart suit trousers Plain dark coloured belt if required
Skirts	Plain coloured smart full-length suit skirt
Socks	Plain black or dark grey Black or natural coloured tights Girls in ballet pumps must wear liners (no trainer socks)
Religious coverings	Head coverings - plain black, white or navy blue Arm coverings – plain, matching the school shirt



GEMS Wellington International School is fully committed to safeguarding the welfare of all students and young people. We recognise our responsibility to take all reasonable steps to promote safe practice and to protect students from harm, abuse and exploitation. We acknowledge our duty to act appropriately in response to any allegations, reports or suspicions of abuse. Paid staff and volunteers will endeavor to work together to develop an ethos which embraces difference and diversity and respects the rights of students, young people and adults. If you have any questions or concerns regarding the safeguarding of children at WIS then please contact one of the Designated Safeguarding Leaders below.



Ms Natalie Twigger
Lower School



Ms Sarah Wright
Middle School



Ms Sophie Gathercole
**Upper School & Whole
School Lead**

Our Designated Safeguarding Leads have received training in dealing with sensitive issues surrounding child protection of both students and parents. It is our duty of care to follow up anything which a student may disclose to us. In some cases this might mean you are invited into school to discuss a situation that your child has raised. If necessary, we seek support and follow professional advice for our families from suitable agencies in Dubai.

Lanyards:

All employees and visitors to the school are required to wear a lanyard for identification purposes. Yellow parent lanyards can be obtained from the reception and this must be done as soon as possible. Photographs are required on the ID cards in the lanyards for identification purposes. In order to apply for a parents lanyard, please complete and return the application form to our reception team on reception_wis@gemsedu.com with clearly labelled photographs of your child and anyone that collects your child from school (Parents/ Guardians/Nanny etc). **Maintaining site security is of the utmost importance. As a result, parents who do not display their lanyards will not be permitted entry to the school site.**

Lanyard Details:

- Blue = GEMS Wellington International School staff
- Yellow = Parents/Guardians – including nannies, maids & drivers
- Pink = People who attend the school regularly, such as external Music Teachers, Invigilators
- Green = Contractors (escorted by a member of staff)
- Orange = Parents & Staff in school for External ECA's

Those attending the school regularly and will be in contact with the students (e.g. pink lanyard wearers) will have completed all of the necessary safeguarding checks and training.

Please do not be offended if we do not let you into school without the proper identification. We take safeguarding of your children very seriously and it is important that everyone can be identified.

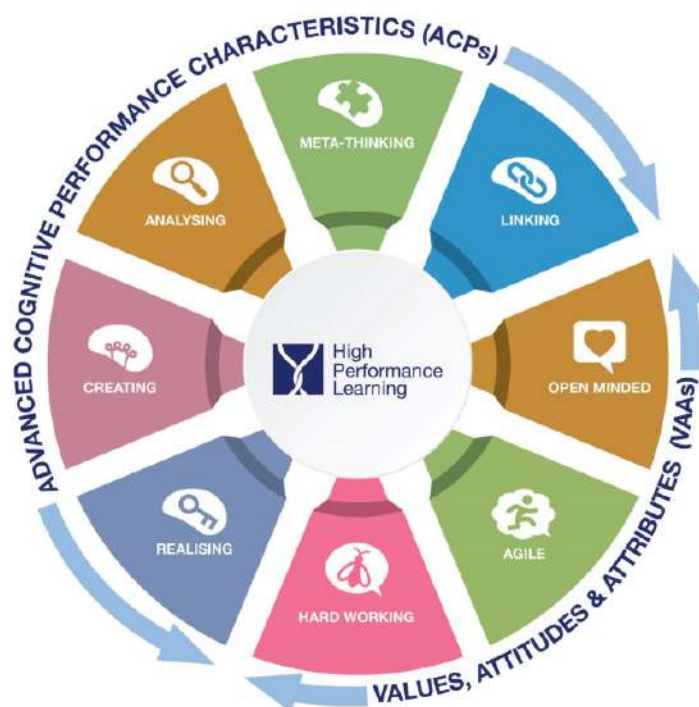


At GEMS Wellington International School our High-Performance Learning (HPL) programme instills within our students that they can achieve the very best grades through the development of appropriate learning habits. To reach the very top, students need to work hard, ask for help when they need it, and, most importantly, believe that they can do it. For them to believe it is possible, it is essential that parents and teachers model that positive assumption, known as our 'Performance Mindset'. As a 'World Class School', accredited by HPL, we do not let our students think "I'm not good enough", but encourage them to believe that with enough hard work that anything is possible and that they can achieve excellence.

The ACPs (Advanced Cognitive Performance Indicators) and VAAs (Values, Attitudes and Attributes) form the key principles of HPL. The ACPs are "thinking skills" and these require practice in order to become a high performer. At WIS we call these 'The HPL Brains' ensuring that our students are encouraged to think analytically and creatively, alongside encouraging them to link ideas and concepts, with the expectations that this is done accurately and quickly to train the brain effectively. In addition to this our students reflect on their learning by 'thinking about thinking', always ensuring they consider 'how' and 'why' they have arrived at a particular conclusion.

At WIS we encourage the belief that success is not possible without the right attitude, so we encourage students to practise and improve their Values, Attitudes and Attributes (VAAs) too, with a focus on three core areas: hard work, empathy and the ability to be agile. These life skills are the DNA of a WIS student.

In school, students develop these ACP's and VAAs explicitly in lessons, but it is also vital for them to continually improve outside of school, realising how they affect every aspect of their lives. In the end, by developing their ACPs and VAAs, the students will become more efficient learners and will be ready for their exams, for further study, work, and for the rest of their lives. WIS prides itself on our students not just being ready for the next stage of their academic journey: our students are ready for whatever challenges in life come their way and as High-Performance Learners, they will tackle life head on with a thirst to overcome any obstacle.





"The aim of all IB programmes is to develop internationally minded people who, recognizing their common humanity and shared guardianship of the planet, help to create a better and more peaceful world. The IB learner profile represents 10 attributes valued by IB World Schools. We believe these attributes, and others like them, can help individuals and groups become responsible members of local, national and global communities."

International Baccalaureate® Organisation

For students in Year 12 and Year 13, the International Baccalaureate® (IB) learner profile describes a broad range of human capacities and responsibilities that go beyond academic success. They imply a commitment to help all members of the school community, learning to respect themselves, others and the world around them. Each of the IB programmes is committed to the development of students according to the IB learner profile. The profile aims to develop learners who are:

- Inquirers
- Knowledgeable
- Thinkers
- Communicators
- Principled
- Open-minded
- Caring
- Risk-takers
- Balanced
- Reflective

IB LEARNER PROFILE

The aim of all IB programmes is to develop internationally-minded people who, recognising their common humanity and shared guardianship of the planet, help to create a better and more peaceful world. IB learners strive to be:

<p>Reflective Give thoughtful consideration to your own learning and experience. You are able to assess and understand your strengths and limitations in order to support your learning and personal development.</p>	<p>Balanced Understand the importance of intellectual, physical and emotional balance to achieve personal well-being for yourself and others.</p>	<p>Knowledgeable Explore concepts, ideas and issues that have local and global significance. In so doing, you acquire in-depth knowledge and develop understanding across a broad and balanced range of disciplines.</p>
<p>Open-minded Understand and appreciate your own culture and personal histories, and are open to the perspectives, values and traditions of other individuals and communities. You seek and evaluate a range of points of view, and you are willing to grow from the experience.</p>		<p>Inquirers Have a natural curiosity and learn to acquire the skills necessary to conduct inquiry and research and show independence in learning. You actively enjoy learning and this love of learning will be sustained throughout their lives.</p>
<p>Risk-takers Approach unfamiliar situations and uncertainty with courage and forethought, and have the independence of spirit to explore new roles, ideas and strategies. You are brave and articulate in defending your beliefs.</p>	<p>Principled Act with integrity and honesty, with a strong sense of fairness, justice and respect for the dignity of the individual, groups and communities. You take responsibility for your own actions and the consequences that accompany them.</p>	<p>Communicators Understand and express ideas and information confidently and creatively in more than one language and in a variety of modes of communication. You are willing to work in collaboration with others.</p>
<p>Caring Show empathy, compassion and respect towards the needs and feelings of others. You have a personal commitment to service, and act to make a positive difference to the lives of others and to the environment.</p>	<p>Thinkers Exercise initiative in applying thinking skills critically and creatively to recognise and approach complex problems, and make reasoned, ethical decisions.</p>	



GCSEs

In Years 10-11, students prepare for and sit their GCSE examinations. These are British qualifications that are taken by all students aged 16 in the UK. We carry out a blend of IGCSE (International GCSEs) and regular GCSE courses. There is no difference in the acceptance of IGCSEs and GCSEs - the only difference is that the International qualifications tend to use less UK/British examples in the questions and can therefore better suit students studying in an international setting.

Core Subjects (these are subjects that will be taken by ALL students)

- English Language & English Literature = 2 GCSE grades
- Combined Science = 2 GCSE grades or Accelerated Triple Science = 3 GCSE grades
- Mathematics = 1 GCSE and Further Mathematics (invite only) = 1 GCSE
- Core PE (non-GCSE, not examined)

This leads to 5 core GCSE's for all students and the possibility of up to 7 core GCSEs for accelerated Mathematics and Science students.

Option subjects:

- Students are required to select four subjects that they would like to study, one of these must be a language.
- Subjects include – Business Studies, Economics, History, Geography, Art, Music, Drama, Photography, Psychology, PE, Design Technology, Dance, Media, Computer Science, French, Spanish, German & Arabic.
- We also offer BTEC qualifications in Business Studies and Creative Media. These are vocational qualifications which are assessed using coursework rather than exams.

Overall, this leads to between 8-11 GCSE qualifications for all students.

International Baccalaureate

In Years 12 and 13 we offer the International Baccalaureate (IB) course of study. We offer three different pathways:

- IB Diploma (IBDP) - students take 6 subjects, 3 at Higher Level and 3 at Standard Level plus the Core of Theory of Knowledge, Extended Essay and CAS.
- IB Careers Related Programme (IBCP) - students take a vocational qualification (BTEC Creative Media, Business or Sports), two IBDP subjects, and the Core including a reflective project.
- IB Courses - students can take a bespoke subject combination such as less than 6 subjects and a mixture of HL and SL subjects. They do not have to take the Core.

For further information International Baccalaureate - <https://www.ibo.org>

Entrance onto our IBDP programme will be dependent on GCSE or MYP results due to the demands of the courses and pathways. If you have any questions about the curriculum, please do not hesitate to contact our Deputy Head of Curriculum, Mr James Rostron - j.rostron_wis@gemsedu.com.

EXPLORE, ENRICH, EXCITE (EEE)

At GEMS Wellington International School, we pride ourselves on the opportunities we provide for our students both from an academic and personal perspective. Our EEE (Explore, Enrich, Excite) Programme allows our students to explore the world around them, provide enrichment to their already outstanding curriculum pathways, as well as excite their minds for the future world.

Our EEE offer complements our in-school calendar and annual global events, as well as the stage of education that our students are currently experiencing. From FS1 to Year 13 each child has access to opportunities designed to prepare them for the new world around them, as well as build upon already established interests.

Over 200 clubs and opportunities are offered as part of our EEE provision that is split into five domains (STEM, Creativity, Sport, Music and Performing Arts, and Wellbeing), this enables students who have a variety of different interests to choose a bespoke provision that best suits their individual needs, remaining consistent with the values, attitudes and attributes of the High-Performance Learning program inside and outside of the classroom. In addition to our incredibly wide ranging offer of face to face provision we also offer a multitude of online activities for our students including:

- Project Based Learning
- Internal and External Competitions
- Guest Speakers

Please access D6 for the link to our fantastic EEE website where you will see some of the great examples of extra curricular provision offered here at WIS.

In addition to our internal EEE provision our external extra-curricular partner ESM provides our students with some fantastic opportunities to take part in both 1:1 and group activities across a wide range of disciplines both in sport and academics. More information about these paid clubs can also be found on our website.

ESM



OUR RESULTS



In 2021, we continued the trend of achieving the best GCSE results in the school's history



In 2021, 3 students achieved 45 IB Points: only 1155 students globally achieved this point score



70% of all GCSE grades were graded at 9-7/A*-A, the highest available grades



In 2021, our average point score was 38. The world average was 33

97% of all GCSE English and Mathematics grades were graded at 9 to 4



177 level 7s were achieved across the cohort



36% of all GCSE grades were graded at Grade 9 (UK average = 15%)



Our graduates attend some of the best universities in the world, including:

52% of all GCSE Grades were an 9/8 and A*

On average our students achieved 2 grades higher than their CAT4 indicator across all subjects

- University of Cambridge
- Stanford University
- McGill
- University of Manchester
- King's College, London
- Imperial College, London
- UCL, University of Toronto
- Purdue





Parental Communication in the Upper School

There are several ways in which the School will communicate with parents:

- Face to Face communication is important with our parents for all students. We encourage you to build relationships with all members of our school community.
- Please download our free app, GEMS Connect, for direct parent communication; our Reception team is here to help with the set-up process. This is our main form of communication with parents.
- Direct emails or SMS to the primary contact—parents are asked to confirm who this should be, i.e. mother or father.
- Weekly newsletter from the Head of Year (Year 12 and 13) sharing some of the learning and activities over the past week and informing you of important dates and events coming up in your child's year group.
- If you have a query, concern or comment please do reach out to your child's Form Tutor or Class Teacher via e-mail
- We will also host a variety of coffee mornings and information evenings which you will be invited to, depending on the purpose as most of these tend to be Year Group specific

Expectations

- Please allow us 48 hours to respond to an email from you. On some occasions it may take longer for us to fully respond but you should hear back from us within 48 hours.
- We ask that emails are written in a courteous manner to our staff. If an email is sent regarding a concern we will do our utmost to respond and rectify the situation. However, we do ask that you write to in a polite manner and avoid the temptation to make generalisations.

Administration Contacts

Please see below for information relating to our key admin contact, who can support you with queries that you may have.



Eleanor Morse
Admissions Director



Emily Lander
Admissions Secretary



Megan Troxler
Parent Relations Executive



Bijili Binu
Admissions Assistant



Claudia Lloyd
Receptionist



Pauline Magege
Receptionist





GEMS Connect

- Please ensure that you download our **GEMS Connect App**. This is our main form of communication and will enable you to view and access all Termly Academic Reports and update any personal details relevant to home/school communication. This will also provide you with a host of GEMS related products and initiatives.



Social Media

- We celebrate the successes of students and teachers on our social media pages and we share the latest news on a daily basis. We use Facebook (**GEMS Wellington International School**), Instagram (**gems_wis**) and Twitter (**@gems_wis**). For safeguarding reasons we ask that you do not post pictures of other students at school events on social media.



- If you do not wish for your child to be featured on Social Media, please contact our Admissions Manager directly on pre_wis@gemsedu.com

Website



- Our website provides you a wide variety of information that you may find helpful. On the website, you can discover more about our Leadership Team, as well as book appointments with them, as well as key information about the curriculum, our policies, enrollment, student life, our school calendar, and so much more. The website address is www.wellingtoninternationalschool.com



WISway Newsletter

- Our weekly method of communication to parents is the WISway newsletter, which provides key messages, weekly highlights and details upcoming events throughout our school. This news letter is released weekly through our GEMS Connect app and sent directly to parents.

A FUTURE-FOCUSED
LEARNING ENVIRONMENT

For any queries or concerns In the first instance, you should contact your child's Form Tutor and then their Head of Year. These members of staff are the best informed to help with any query you might have. If necessary, they can then pass your query to a member of staff who is better placed to help.

If you have an appointment with a member of staff, then please come to the front reception desk where our reception staff will contact the person you have the appointment with. They will meet you and escort you to the designated meeting room. It is always best to ensure that a prior request is made for an appointment, so that our teachers and staff can plan accordingly for your visit to school.

Pastoral Leader Email Addresses:

Head of Upper School (Ms Gathercole) - s.gathercole_wis@gemsedu.com

Assistant Headteacher - Year 10-11 (Mr Herring) - m.herring_wis@gemsedu.com

Assistant Headteacher - Year 12-13 (Mr McLaughlin) - m.mclaughlin_wis@gemsedu.com

Head of Year 10 (Mr Brown) - d.brown_wis@gemsedu.com

Head of Year 11 (Ms Dunn) - r.dunn_wis@gemsedu.com

Head of Year 12-13 (Ms Watson) - c.watson_wis@gemsedu.com

Some other key email addresses are:

PA to Principal - (Ms Claire Doherty) – secondaryadmin_wis@gemsedu.com

Deputy Headteacher of Arabic and Islamic (Mrs Habiba Hamdan) – h.hamdan_wis@gemsedu.com

Assistant Headteacher for Intervention (Ms Kennedy) - r.kennedy_wis@gemsedu.com

Assistant Headteacher for Inclusion (Ms Harris) - w.harris_wis@gemsedu.com

Upper School SENDCo (Mrs Nicola Harrison) – n.harrison_wis@gemsedu.com

Head of IB Strategy (Mr Harrison) - a.harrison_wis@gemsedu.com

IBDP Coordinator((Ms Kavita Bedi) - k.bedi_wis@gemsedu.com

IBCP Coordinator (Ms Jacki Ronalds) - j.ronalds_wis@gemsedu.com

MEDICAL PROVISION

What should your child do if they feel unwell?

Our fully qualified Clinical Team are on hand to support and look after the students in the event of illness or injury. Dr Ishrat Jehan and Nurses Christine Caculitan, Jissa Wilson and Christine Bravo have a wealth of experience in their field, alongside many years working within Dubai Schools.

**Dr Ishrat Jehan****Kristine Caculitan
(Nurse)****Jissa Wilson
(Nurse)****Mary
(Nurse)****Rashida
(Nurse)**

The school clinics are located between the swimming pool and the sports hall. If your child feels unwell during the school day, they should speak to their teacher who will then decide if a visit to the Nurse or Doctor is necessary. The teacher will then ensure they are escorted to the Clinic.

The clinic is operational between 7.30am-4.30pm Monday-Thursday and 7.30am-12.15pm on Friday. If the Clinical Team decides your child is unwell they will call home to let you know or to ask you to collect your child from school.

If the child is treated at school the Clinical Team will send home a green medical information slip so you are aware of the treatment. Examples of this are; Plaster on a minor cut, cream administered for mosquito bite.

The email address for the Clinical Team is wismedicaldepartment_wis@gemsedu.com and you can also call the school on **04 307 3000** and ask for the medical team. **Please note for all COVID-19 related enquires including questions or relevant documentation please contact health_wis@gemsedu.com**

Sending medication to school:

If your child requires medication and has to take it during the school day, you should send this with a note and instructions to the nurses. The student will attend the clinic at the required time and the nurses will ensure the right amount of medication is administered.



**WISPA**

Our Wellington International School Parents Association (WISPA) are an integral part of the WIS school community and with more than 5000 parents in the school, the organisation is ever expanding, with a calendar full of events.

WISPA's aim is to promote our ethos of 'Parents as Partners', creating a bridge for increased parental partnership with events that bring together the WIS community. They play an important role in supporting the school's leadership team in developing the strategic vision for the school, creating opportunities to ensure that everyone has a sense of belonging to the WIS school community.

WISPA look forward to another successful academic year in 2022/2023. If you would like to get involved please reach us out on wispadubai@gmail.com or find us on our closed Facebook page - 'WIS Parents Support Group / WISPA'.



Above and Beyond



We are delighted to share with you our **'Above and Beyond'** website for our Upper School students, which can be accessed from the start of the summer break.

The website holds a variety of engaging activities for students to complete in their own time.

This was a successful initiative that we launched over the last Summer break, with every intention of helping to not only reinforce learning that has taken place this term, but to also prepare your child for the start of the 2021/22 academic year.

Please see the information available on the Above and Beyond website:

<https://sites.google.com/gemswis.com/middle-upper-above-beyond/home>



GEMS Wellington International School
مدرسة جيمس ولينغتون
انترناشيونال

