



**GEMS WELLINGTON  
INTERNATIONAL SCHOOL**

**UNIFORM GUIDE**

# INDEX

➤ Introduction	3
➤ Core Uniform (FS1 to Y2)	4
➤ Core Uniform (Y3 to Y6)	5
➤ Core Uniform (Y7 to Y9)	6
➤ Core Uniform (Y10 to Y11)	7
➤ Core Uniform (Y12 to Y13)	8
➤ PE Uniform (All Grades)	9
➤ Winter Uniform (All Grades)	10
➤ Swimwear (All Grades)	11
➤ Additional Items (All Grades)	12
➤ Uniform Care	13
➤ Shopping & Customer Care	14
➤ Sizing	15-20
➤ Iron on Name Label	21

Dear Parent,

We would like to take this opportunity to welcome you to Threads. This guide has been put together to assist you on the following:

- Selecting the correct uniform for your child
- Identifying the suitable size
- Maintaining the uniform
- Ordering
- Retail locations relevant to your school
- Information on customer service

We hope that you will find this guide useful. If you have any comments or suggestions relating to this guide kindly email these to [support@threadsme.com](mailto:support@threadsme.com).

We wish your child all the success for this academic year and would like to thank you for your continued custom and support.

Thanking You,

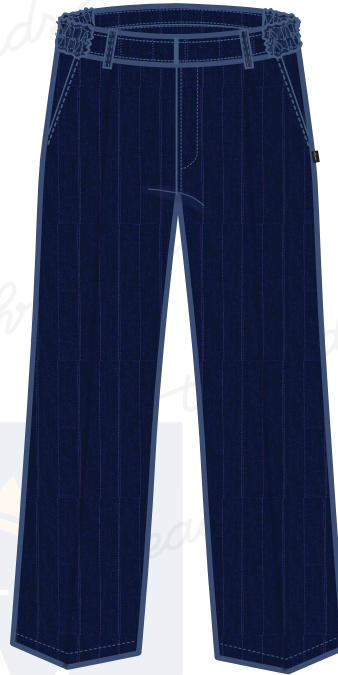
Team@  threads™

### Boys

Polo Shirt



Navy Trousers



First 2 sizes will be in full elastic



Navy Shorts

### Girls

Polo Shirt



Navy Trousers



Skort





## Boys

Shirt



Navy Trouser



Navy Shorts



## Girls

Shirt



Navy Trouser



Navy Skorts



## Boys

Shirt



Navy Trousers



## Girls

Blouse



Navy Trousers



Navy Long Skirt



Navy Knee Skirt





### Boys

Shirt



Navy Trousers



### Girls

Blouse



Navy Trousers



Navy Long Skirt



Navy Knee Skirt



### Boys

Shirt



Solid Navy Trouser



### Girls

Blouse



Solid Navy Trouser



White / Navy



Black / Navy



## HOUSE COLOURS

<b>RED</b>	<b>GREEN</b>	<b>WHITE</b>	<b>BLACK</b>
<b>RUBY</b>	<b>EMERALD</b>	<b>DIAMOND</b>	<b>ONYX</b>

Red / Navy



Green / Navy





## Navy Jacket



## Navy Pullover



SWIMSUIT



Navy / Black



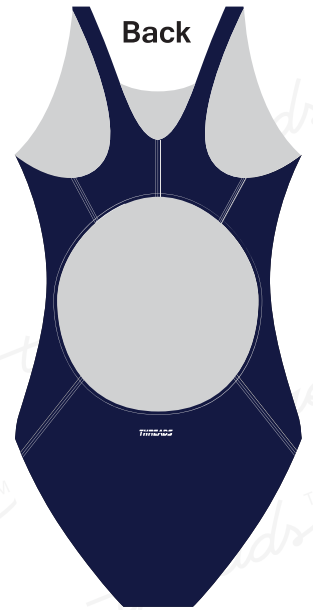
Navy / White



Navy / Green



Navy / Red



Back

JAMMER



Navy / Green



Navy / Black



Navy / White



Navy / Red



Back

SWIMMING TRUNKS  
KG1 & KG2



Navy / Red

Navy / Green



Navy / Black



Navy / White



SILICON CAP



Front



Back

### UNISEX CAPS

Baseball Cap - Y 3 to Y 6



### UNISEX CAPS

Legionnaire Cap - Year FS1 To Y2



### TIES & SCARFS



### HAIR BAND & SCRUNCHIES / BLACK BELT



### SOCKS & TIGHTS



### SHOES



Girls  
Black Velcro

Girls Black  
without Velcro

Boys  
Black Velcro

Boys  
Black Lace

Unisex White  
Single Velcro

Unisex  
White Lace

### BAGS



NOTE BOOK BAG

GYM BAG

12 INCHES

16 INCHES

18 INCHES

The following guidelines will help you gain longevity from your garment.

## WASH CARE SYMBOLS



SKIRTS/TROUSERS/PINAFORE /SHORTS

Wash at 40 °C. Higher temperatures will cause shrinkage, affect the colour or weaken the fibres. Wash dark colours separately. Avoid strong fabric conditioners as they can break the fibres.

Do not bleach. Do not tumble dry pleated garments as the pleats will disappear. For best results simply drip dry after washing.

Warm iron if needed (150°C maximum). If you want to improve the creases, use a steam iron or a clean damp cloth, with a regular iron. Do not iron on top of Print or Embroidery directly, please iron on reverse side. Never use a hot iron directly on the garment.

## WASH CARE SYMBOLS



SPORTS SHORTS/TRACK PANTS/PE POLO SHIRTS

Wash at 40 °C. Higher Temperatures will cause shrinkage, affect the colour or weaken the fibres. Wash dark colours separately. Remove promptly. Avoid strong fabric conditioners.

Do not bleach. These products will dry very quickly, if left to dry naturally, but if you want to do tumble dry, pls do it in cool/low setting & remove promptly. Drip dry after washing.

Ironing is not necessary for these products. However if you still want to iron, use a cool iron setting (110°C maximum). Do not iron directly on the garment, place a clean damp cloth between the garment and the iron. Do not iron with excessive heat as this makes the fabric brittle. Do not iron on top of print or Embroidery directly, please iron on reverse side.

## WASH CARE SYMBOLS



SHIRTS - BLOUSES  
65% Polyester,  
35% Cotton weave

Can be machine washed on a Gentle/ polyester/easy care/delicate Setting, with upto 40°C. Avoid strong fabric conditioners. Wash dark colours separately.

Do not bleach. These garments can be tumble dried on a cool/low setting. If the temperature is higher the fibres can be damaged and shrinkage may occur.

With these garments ironing is not always necessary if it is hanged during drying, after washing. However if you still want do ironing, change the setting to synthetic/ cool iron (110°C maximum) and do iron. Ironing will be easier if the garment is slightly damp. Do not iron on top of print or Embroidery directly please iron on reverse side.

## WASH CARE SYMBOLS



Knitted fabrics  
100% acrylic;  
combinations of:  
wool/nylon, wool/acrylic,  
wool/polyester (jumpers,  
cardigans, scarves &  
hats); cotton/acrylic;  
cotton/polyester;  
cotton/nylon

Turn the garment inside out before washing, to reduce the loose fibres adhering to the outer surface of other garments. Use Cool 30°C washing with gentle/ delicate/wool setting, with a short spin. Always wash the garment separately, or with similar colour garments. Use only mild detergent if required. Some fabric conditioners may harm the garment fibres thereby increasing pilling

Do not bleach. Do not tumble dry, the fabric can be damaged and the neck, welt and cuffs can lose their elasticity. Always dry FLAT and Dry in the shade (direct sunlight will harm the garment).

NEVER iron on the face fabric of the garment, as it will change the appearance of the garment and cause shine. Always iron the inside of the garment.

## SHOE CARE - BLACK

Simply remove excess dirt with a cloth and/ or a brush and apply the cream shoe polish never liquid shine evenly to your shoes.

Make it a point to polish your shoes once in 2 days to restore the appearance of your shoes.

Store your shoes using a shoe tree, this will help the shoe retain its shape. If you don't have a shoe tree, stuff the toe cap with newspaper or tissue.

Never store shoes near direct heat.

\* KINDLY NOTE THAT ANY PRINTS / LOGOS / EMBELLISHMENTS MUST NOT BE IRONED ON DIRECTLY BUT INSTEAD ON THE REVERSE.



## Shopping & Customer care

Please visit our website [www.threadsme.com](http://www.threadsme.com) for updated information on our operational timings. You can also see our notice board to get the updated information about uniform availability.

Shop online You can now shop online at [www.threadsme.com](http://www.threadsme.com) Subject to availability your order will be dispatched within 2 - 4 working days to your registered / requested location. Once your order has been dispatched you will be notified of the tracking number and you can track your order online.

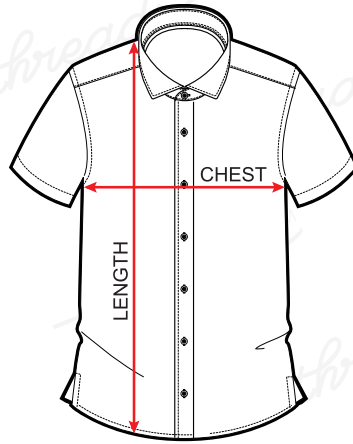
Made to measure (custom-made uniforms) option is also available if your preferred size is not in stock. The standard delivery time is 15 days during the off peak seasons and will extend up to 30 days during the peak seasons. To request a made to measure form or require any assistance on made to measure kindly send an email to [support@threadsme.com](mailto:support@threadsme.com), alternatively you can request an online appointment at [www.threadsme.com](http://www.threadsme.com)

Online ordering of Made to Measure uniforms is available at Threads' e-commerce website. The processes of ascertaining the measurements are clearly indicated with simple diagrams.

Free collection point deliveries: The customers can collect the online order (readymade / made to measure) from any retail shop of Threads as per their conveniences without paying for the courier charges. The collection point needs to be properly indicated at the time of placing the online order.

At Threads we take our commitment to customer service very seriously. Customer concerns and queries can be registered at [support@threadsme.com](mailto:support@threadsme.com) or through our toll free number (800-THREADS) A customer services representative will respond to your query within 24 working hours.



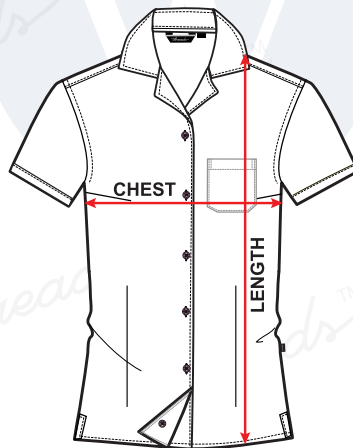


Shirt

SIZE:	4	6	8	10	12	14	16	18
CHEST	25	27	29	32	35	38	41	42
LENGTH	18.5	20	21.5	23	24.5	26	27.5	29

SIZE:	20	22	24	26				
CHEST	46	48	51	53				
LENGTH	29.5	30.5	32	33				



Blouse

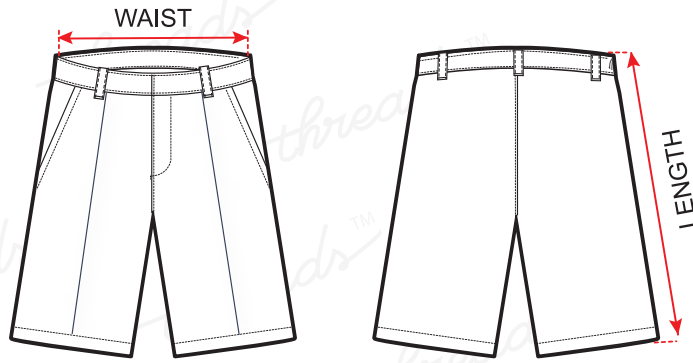
SIZE:	4	6	8	10	12	14	16	18
CHEST	25	27	30	33	35	38.5	41	43
LENGTH	18.5	20	21.5	23	24	25.5	27	28

SIZE:	20	22	24					
CHEST	45	47	49					
LENGTH	29	30	31					

NOTE

All measurements are in inches.  
 These sizes are only a guide and may vary for the Individual body type.



Shorts

SIZE	2	4	6	8	10	12	14	16
WAIST(Relaxed)	17	18	19	20	22	25	27	29
WAIST(Extended)	23	24	25	26	28	31	33	35
LENGTH	11.5	12.5	13.5	14.5	15.5	16.5	18	19

SIZE	18	20	22	24	26	28	30
WAIST(Relaxed)	31	33	35	37	39	41	43
WAIST(Extended)	37	39	41	43	45	47	49
LENGTH	19	19	19.5	21.5	22	24	24.5



Skorts

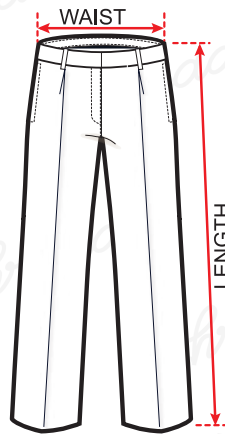
SIZE	2	4	6	8	10	12	14	16
WAIST(Relaxed)	18	20	22	24	26	28	30	32
WAIST(Extended)	22	24	26	28	30	32	34	36
LENGTH	11.5	12.5	13.5	14.5	15.5	16.5	17.5	18

SIZE	18	20	22
WAIST(Relaxed)	34	36	38
WAIST(Extended)	38	40	42
LENGTH	18.5	19	19.5

NOTE

All measurements are in inches.  
 These sizes are only a guide and may vary for the Individual body type.

MEASUREMENT  
IMG FOR BOYS & GIRLS



### Boys Trousers

SIZE	4	6	8	10	12	14	16	18
WAIST(Relaxed)	18	20	21	22	23	24	25	26
WAIST(Extended)	23	25	26	27	28	29	30	31
LENGTH	25.5	27.5	28.5	29.5	30.5	31.5	32.5	34

SIZE	20	22	24	26	28	30	32	34
WAIST(Relaxed)	27	28	29	33	37	41	45	49
WAIST(Extended)	32	33	35	38	42	46	50	54
LENGTH	35.5	36.5	41.5	42	43.5	44	44.5	45

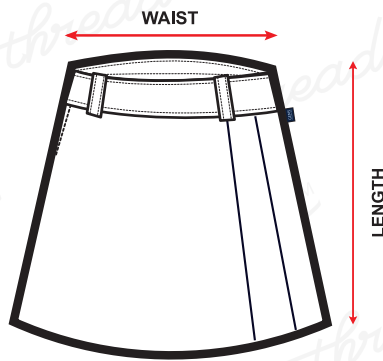
### Girls Trousers

SIZE	4	6	8	10	12	14	16	18
WAIST(Relaxed)	19	20	21	22	23	24	25	26
WAIST(Extended)	23	24	25	26	27	28	29	31
LENGTH	25.5	26.5	27.5	28.5	29.5	30.5	31.5	31.5

SIZE	20	22	24	26	28	30	32
WAIST(Relaxed)	27	28	29	31	33	35	37
WAIST(Extended)	31	32	33	37	37	39	41
LENGTH	32.5	34	36	36.5	37	37.5	39.5

**NOTE**

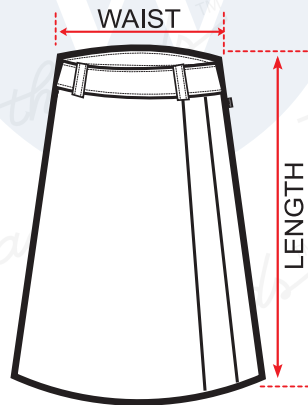
All measurements are in inches.  
These sizes are only a guide and may vary for the Individual body type.



### Knee Skirt

SIZE:	2	4	6	8	10	12	14	
Waist (Relaxed)	17	17	19	21	23	25	28	
Waist (Extended)	21	21	23	25	27	29	32	
KNEE LENGTH	15	16	17	18	19	20	21	

SIZE:	16	18	20	22	24			
Waist (Relaxed)	31	34	38	41	44			
Waist (Extended)	35	38	42	45	48			
LENGTH	22	23.5	23.5	24.5	24.5			



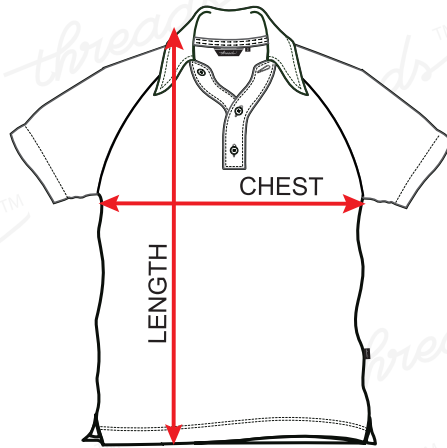
### Long Skirt

SIZE:	4	6	6L	8	10	12	14	16
Waist (Relaxed)	17	19	19	21	23	25	28	31
Waist (Extended)	21	23	23	25	27	29	32	35
LENGTH	30.5	31.5	-	32.5	33.5	35.5	38	40.5

SIZE:	18	20	22	24				
Waist (Relaxed)	34	39	41	44				
Waist (Extended)	38	42	45	48				
LENGTH	41.5	43	44.5	46				

**NOTE**

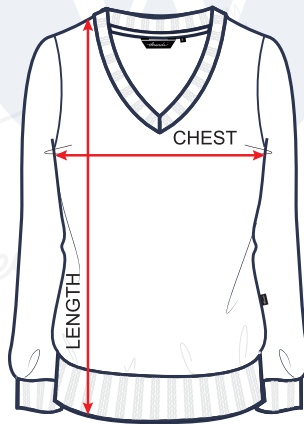
All measurements are in inches.  
 These sizes are only a guide and may vary for the Individual body type.



**Polo Shirt**

SIZE:	2	4	6	8	10	12	14	16
CHEST	23	25	27	29	32	33	36	38
LENGTH	15.5	16.5	18	19.5	21	21.5	23.5	24.5

SIZE:	18	20	22	24	26	28		
CHEST	40	42	45	48	50	52		
LENGTH	25.5	27	28	29.5	31.5	32.5		



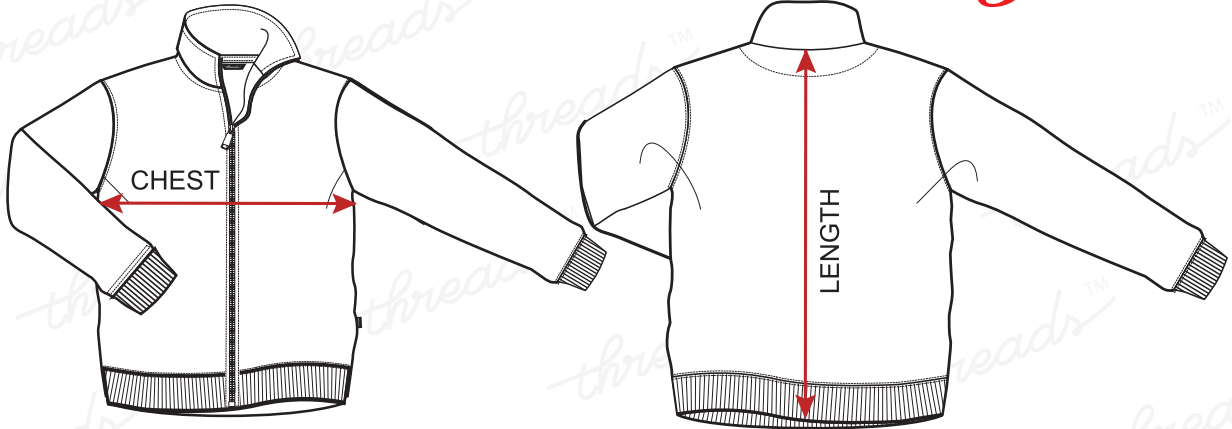
**Pullover**

SIZE:	18	20	22	24	26	28	30	32
CHEST	22	24	26	29	31	34	37	40
LENGTH	15.5	16	17	19	21	21.5	22.5	24

SIZE:	34	36	38	40	42	44		
CHEST	42	44	47	50	53	56		
LENGTH	25.5	27.5	29.5	31	33	35		

**NOTE** | All measurements are in inches.  
 These sizes are only a guide and may vary for the Individual body type.

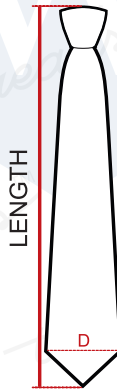




**Jacket**

SIZE:	2/3XS	4/2XS	6/XS	8/S	10/M	12/L	14/XL	16/2XL
CHEST	26	28	31	34	37	40	43	45
LENGTH	18	19	20	21.5	22.5	24	25.5	27

SIZE:	18/3XL	20/4XL	22/5XL					
CHEST	47	50	54					
LENGTH	29	31	33					



**Tie**

SIZE:	13	15	54	59				
TIE LENGTH	13	15	54	59				

**Shoes**

UK SIZE	9	10	11	12	13	1	2	3	3.5	4	4.5	5	6	7	8	9	10	11	12	13
EU SIZE	27	28	29	30	31	32	33	34	35	36	37	38	39	40	41	42	43	44	45	46

**NOTE**

All measurements are in inches.  
 These sizes are only a guide and may vary for the Individual body type.

## *Iron on Name Labels*

Iron on name labels are used to identify the clothes of your children. Our Iron on name labels are perfect for labelling virtually any type of clothing garment. The Iron on labels are suitable for any fabric which can be ironed. Iron on labels take seconds to apply and are guaranteed not to peel off or fade in a hurry. Please make sure you follow the below instructions.

- Remove a label from the clear backing material
- Set your iron to the hottest setting. NO STEAM...!
- Wait until the iron gets hot
- Place label on garment in desired position
- Cover label with a thin white clear A4 paper
- FIRMLY press heated iron on A4 paper for 15 seconds
- Verify your application time and iron temperature
- Apply labels to CLEAN, thoroughly dry garments only. Labels applied to soiled or damp garments will not adhere properly
- Allow garment and label to cool to room temperature. Then try to peel the label off with your fingernail. If you can peel it off, your iron is not hot enough. Use another iron or reapply it for 15-20 seconds

*Jennifer*

